

LANDSCAPE ARCHITECTURE

JANUARY 1994
UNIVERSITÀ DI STUDI DI TRENTO
BIBLIOTECA
N. 358699

TECHNIQUE & PRACTICE

- 3 1** **Computers** Digital terrain modeling
by Stephen M. Ervin

- 4 0** **Low-Voltage Lighting** Energy-efficient alternatives
by Kim Sorvig

- 4 4** **Colored Concrete** High style and durability
by John D. Taylor

- 5 6** **COVER STORY** Sustainable design

- 5 7** **Is Sustainable Attainable?** Debating 'benign' development
by Paul Roberts

- 6 2** **The Wet Look** New Mexico's constructed wetlands
by Kim Sorvig

- 6 4** **A Passage to Yucatan** Ecotourism as economic answer
by J. William Thompson

- 7 2** **Landscape as Myth and Culture** Mexico's Mario Schjetnan
by J. William Thompson

- 7 6** **The Perfect Arena** New directions at NPS
by Michele Strutin

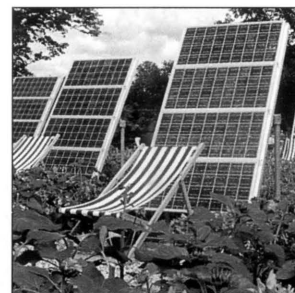
- 1 4 4** **Prospect** Landscape in process
by John T. Lyle

DESIGN & ENVIRONMENT

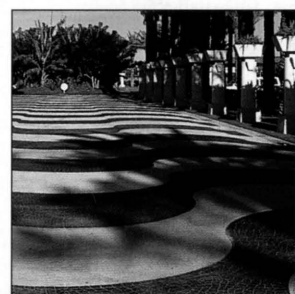
- 8 8** **The 'Stealth' Rainforest** Eden in progress?
by Paul Roberts

- 9 2** **Cycles of the Season** Montreal's biodome
by Nancy Levinson

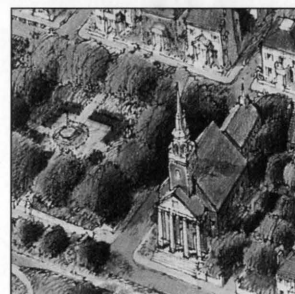
- | | | | |
|----|-----------------|-----|----------------------|
| 10 | Letters | 96 | Buyer's Guide |
| 21 | News | 141 | Product News |
| 50 | Critic-at-Large | 143 | Reader Service Index |



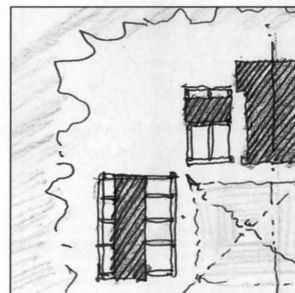
21



44



57



64

ON THE COVER: Scenes from the site of ASLA's charette on sustainable tourism in Yucatan. Top to bottom: A constructed pond for harvesting salt; a natural savannah; Ría Celestún estuary and wildlife refuge; a hurricane-ravaged forest. Photos by Tom Lamb.

Landscape Architecture (ISSN 0023-8031) is published monthly by the American Society of Landscape Architects, copyright 1994. Second-class postage paid at Washington, DC, and additional mailing offices. SUBSCRIPTIONS: U.S.: \$12/year, \$80/2 years. Canada and foreign surface mail: \$70/year, \$132/2 years. Airmail: \$125/year, \$238/2 years. Students: \$32/year. Single copies \$7. Send U.S. funds to Landscape Architecture, 4401 Connecticut Ave., NW, 5th Floor, Washington, DC 20008-2302. For subscription information or to charge your order, call our toll-free number: (800) 787-LAMS. ASLA members: \$21 of dues is designated for magazine subscription; please direct your inquiries to the Membership Department: (202) 686-2752.

POSTMASTER: Send address changes to Landscape Architecture, 4401 Connecticut Ave., NW, 5th Floor, Washington, DC 20008-2302.